

PM2000 series EASY CHOICE METER



PM2000 LCD Display



PM2000 LCD Display



Analogue IO module



Digital IO module

Essential measurements: collect the parameters you need with a single meter — voltage, current, power, demand, energy (active, reactive, apparent), THD and harmonics, % unbalance, active load timer, meter operation timer, run hours.

THD & Individual harmonics up to 15th or 31st: accurate harmonics monitoring under varied operating conditions helps determine harmonic contents and causes.

Min/max values with date/time stamp: time stamps on commonly-viewed instantaneous parameters (V L-L, V L-N, Amps, W, VA, VAR, PF, Hz) help analyse the electrical network and pinpoint abnormalities.

Rate counters: two configurable rate counters for custom use (e.g. measure kgCO₂/kWh or tariff rate based on the energy consumption).

Data logging: choose up to two parameters from a selection of six energy, three power, and three demand parameters at user-defined intervals, up to 60 days at 15 minute intervals.

Extended voltage range: Direct connection up to 600 V L-L without voltage transformers.

Software integration

The meter easily integrates with utility SCADA, building management systems, plus a wide range of power and energy information software.

Choose **StruxureWare Power Monitoring Expert** software to maximize all the meter's advanced features. Real-time data and data logs stored on board can be automatically retrieved on a scheduled basis for analysis at the system level.

EASY CHOICE METER: PM2000, DM6000H, GENERATOR METER

Applications

- Energy management
- Harmonic monitoring
- Monitor and control ACB, MCCB

Ứng dụng

- Quản lý điện năng
- Giám sát sóng hài
- Giám sát và điều khiển ACB, MCCB

Unit price (incl.VAT) in VND

Description	Reference	Unit Price
Multi Meter LED Display, Class 1	METSEPM2110	7.458.000
Multi Meter LED Display, Class 1, Modbus, Analyze harmonic up to level 15 th	METSEPM2120	8.382.000
Multi Meter LED Display, Class 0.5S, Modbus, Analyze harmonic up to level 31 st	METSEPM2130	10.543.500
Multi Meter LCD Display, Class 1	METSEPM2210	9.179.500
Multi Meter LCD Display, Class 1, Modbus, Analyze harmonic up to level 15 th	METSEPM2220	11.022.000
Multi Meter LCD Display, Class 0.5S, Modbus, Analyze harmonic up to level 31 st	METSEPM2230	12.738.000
2DI and 2DO module for PM2130, PM2230	METSEPM2KDGTLIO22	3.124.000
2AI and 2AO module for PM2130, PM2230	METSEPM2KANLGIO22	3.679.500
Multi Meter LED Display, VAF PF %Unbalance Timmer, Class 1	METSEDM6000HCL10NC	3.476.000
Multi Meter LED Display, VAF PF %Unbalance Timmer, Class1, Modbus	METSEDM6200HCL10RS	3.998.500
Generator Meter, Dual source, 6 C T inputs, Class 0.5, Modbus	METSEPM1130HCL05RS	5.439.500

Feature set summary	PM2110	PM2120	PM2130	PM2210	PM2220	PM2230
Accuracy Class for Wh	1.0	0.5S	1.0	1.0	0.5S	
Accuracy Class for VARh	1.0					
Accuracy for VAh	+/- 0,5%					
Amps, per-phase, average and calculated neutral current	■					
Voltage, V L-N, VL-L, per-phase and average	■					
Power Factor	True PF	True PF Displacement PF ⁺³		True PF	True PF Displacement PF	
Frequency, any available phase	■					
Power: W, VA, VAR: per-phase and total	■					
3-phase unbalance %	Current	Current Voltage ⁺³		Current	Current Voltage	
Energy: Wh, VAh, VARh (4 quadrant) Delivered (Import or Forward), Received (Export or Reverse)	Delivered, Received	Delivered, Received Total ⁺³ , Net ⁺³ , Last cleared ⁺³		Delivered, Received, Total, Net	Delivered, Received Total, Net, Last cleared ⁺³	
Active load timer, meter operating timer, run hours and power outage counter	Through com			■		
THD: Voltage L-N or L-L, Amps per phase	■					
Individual harmonics for Voltage, Current, per-phase	Up to 15 th ⁺³		Up to 31 st ⁺³		Up to 15 th	Up to 31 st
Min/ Max with real time clock For avg or total of V L-L, V L-N, Amps, PF, Hz, W, VA, VAR parameters with date and time stamp of occurrence	Through com					
Communication	Pulse Output	RS-485		Pulse Output		
Expandable Analogue IO modules (2 inputs & 2 outputs) ⁺⁵	■				■	
Expandable Digital IO modules (2 inputs & 2 outputs) ⁺⁵	■				■	
Customizable data logging up to 2 parameters.	■				■	
2 am snap shot					■	
Rate counters: kgCO ₂ emission or energy cost)					■	

⁺³Through communication only

⁺⁵Any one IO module can be used at a time with PM2130 or PM2230 meter. The control power range with IO module shall be 90 to 300V AC L-N or DC

PM5000 series MULTIPLE TARIFFS METER



Main Screen



Harmonics screen



Phasor screen

Multiple tariffs: offer the most flexibility with billing structures, PM5300 meters have 4 tariffs, PM5560 meter have 8 tariffs. These meters can also be used as a dual source meter.

Built-in digital input, output and relay for easy circuit breaker monitoring and control: The PM5300 provides two relay outputs with capability to command most of the circuit breaker coils directly. For Digital Inputs, monitored dry contact can be wired directly to the meter without external power supply.

Harmonics: measure individual harmonics up to 31st order for PM5300, and 63rd for PM5500.

Data logging and internal memory

PM5560: 14 selectable parameters with configurable interval and duration (e.g. 6 parameters for 90 days @ 15 minute interval).

PM5300: 2 parameters (kWh and kVAh) with configurable interval and duration (e.g. 2 parameters for 60 days @ 15 minute interval).

Communication: Modbus TCP/IP and RS488.

Extended voltage range: Direct connection up to 690 V L-L without voltage transformers.

Software integration

The meter easily integrates with utility SCADA, building management systems, plus a wide range of power and energy information software.

Choose **StruxureWare Power Monitoring Expert** software to maximize all the meters advanced features. Real-time data and data logs stored on board can be automatically retrieved on a scheduled basis for analysis at the system level.

PMS5000 series - MULTIPLE TARIFFS METER

Applications

- Energy management with multiple tariffs
- Harmonic monitoring
- Monitor and control ACB, MCCB

Ứng dụng

- Quản lý điện năng theo nhiều đơn giá
- Giám sát sóng hài
- Giám sát và điều khiển ACB, MCCB

Unit price (incl.VAT) in VND

Description	Reference	Unit Price
Meter Class 0.5S, 4 tariff, 2DI/2DO, Modbus RS485, Analyze Harmonic up to level 31 st	METSEPM5310	17.880.500
Meter Class 0.5S, 4 tariff, 2DI/2DO, Modbus TCP/IP, Analyze Harmonic up to level 31 st	METSEPM5320	21.477.500
Meter Class 0.5S, 4 tariff, 2DI/2DO/2Relay, Modbus RS485, Analyze Harmonic up to level 31 st	METSEPM5330	20.427.000
Meter Class 0.5S, 4 tariff, 2DI/2DO/2Relay, Modbus TCP/IP, Analyze Harmonic up to level 31 st	METSEPM5340	22.896.500
Meter Class 0.2S, 8 tariff, 4DI/2DO, Modbus TCP/IP & RS485, Analyze Harmonic up to level 63 rd	METSEPM5560	35.524.500
Meter Class 0.2S, 8 tariff, 4DI/2DO, Modbus TCP/IP & RS485, Analyze Harmonic up to level 63 rd , remote display	METSEPM5563RD	37.466.000
Meter Class 0.5S, 4DI/2DO, Modbus RS485	METSEPM5350	14.613.500

Features and Options	PM5100		PM5330				PM5530	
	PM5100	PM5110	PM5310	PM5320	PM5330	PM5340	PM5560	PM5563
Installation								
Fast installation, panel mount with integrated display	■	■	■	■	■	■	■	-
Fast installation, DIN rail mountable	-	-	-	-	-	-	-	■
Accuracy Display								
Display	CI 0.5	CI 0.5	CI 0.5	CI 0.5	CI 0.5	CI 0.5	CI 0.2	CI 0.2
Blacklit LCD, multilingual, bar graphs, 6 lines, 4 concurrent values	■	■	■	■	■	■	■	■
Power and energy metering								
3-phase voltage, current, power, demand, energy, frequency, power factor	■	■	■	■	■	■	■	■
Multi-tariff	-	-	4	4	4	4	8	8
Power quality analysis								
THD, thd, TDD	■	■	■	■	■	■	■	■
Harmonics, individual (odd) up to	15th	15th	31st	31st	31st	31st	63rd	63rd
I/Os and relays								
I/Os	1DO	1DO	2DI/2DO	2DI/2DO	2DI/2DO	2DI/2DO	4DI/2DO	4DI/2DO
Relays	0	0	0	0	2	2	0	0
Alarms and control								
Alarms	35	35	35	35	35	35	52	52
Set point response time, seconds	1	1	1	1	1	1	1	1
Single and multi-condition alarms	-	-	■	■	■	■	■	■
Boolean alarm logic	-	-	-	-	-	-	■	■
Communications								
Serial ports with modbus protocol	-	1	1	-	1	-	1	1
Ethernet port with Modbus TCP protocol	-	-	-	1	-	-	2**	2**

** 2 Ethernet ports for daisy chain, one IP address.

PM8000 series POWER QUALITY METER



Summary page



Harmonic page



Alarm Notification by Email

Compliance reporting and power quality analysis: Monitors and logs parameters in support of international power quality standards: IEC61000-4-30 Class S, IEC62586, EN50160.

Onboard power quality reports via onboard web pages: Basic event summary and pass/fail reports, such as EN50160 for power frequency, supply voltage magnitude, supply voltage dips, short and long interruptions, temporary over voltages, voltage unbalance and harmonic voltage.

Harmonic analysis: up to the 63rd harmonic.

Sag/swell detection and capture: current and voltage, alarm on disturbance event, waveform capture with per-event information.

Onboard data and event logging: 512MB of standard non-volatile memory. 10 MB of standard non-volatile memory dedicated to capture billing data, events, and waveforms.

Alarming: Alarm notification via email text message.

Flexible remote communications: Modbus, ION, DNP3, IEC61850, TCP/IP.

Software integration

The meter easily integrates with utility SCADA, building management systems, plus a wide range of power and energy information software. Choose StruxureWare Power Monitoring Expert software to maximize all the meter's advanced features. Real-time data and data logs stored on board can be automatically retrieved on a scheduled basis for analysis at the system level.

PM8000 series - POWER QUALITY METER

Applications

- Harmonic, sag, swell monitoring
- Waveform capture
- Send alarm notification by email

Ứng dụng

- Giám sát sóng hài, biến động điện áp
- Chụp ảnh dạng sóng
- Gửi cảnh báo bằng email

Unit price (incl.VAT) in VND

Description	Reference	Unit Price
PM8000 Meter Class 0.2S, Analyze harmonic up to 63 rd level Memory 512MB, IEC61850, Sag/Swell/Waveform capture	METSEPM8240	118.387.500
PM8000 remote display, Analyze harmonic up to 63 rd level Memory 512MB, IEC61850, Sag/Swell/Waveform capture	METSEPM8244	121.704.000
PM8000 Digital I/O module (6DI & 2 relay)	METSEPM89M2600	23.699.500
PM8000 Analogue I/O module (4AI & 2AO)	METSEPM89M0024	32.708.500

General

Use on LV and MV systems	■
Current accuracy (5A Nomiinal)	0.1% reading
Voltage accuracy (57V LN/100V LL to 400V LN/690V LL)	0.1% reading
Active energy accuracy	0.2%
Number of samples/cycle or sample frequency	256
Power quality measurements	
Harmonie distortion	Current and voltage
Individual harmonics	Via front panel and Web page
	Via StruxureWare software
Waveform capture	■
Detection of voltage swells and sags	■
Fast acquisition	1/2 cycle data
EN 50160 compliance checking	■
Customisable data outputs (using logic and math function)	■
Communication	
RS 485 port	1
Ethernet ports	2
Serial port (modbus, ION, DNP3)	■
Ethernet port (modbus/TCP, ION TCP, DNP3 TCP, IEC 61850)	■



Advanced Power Quality meets unparalleled innovation

PowerLogic™ ION9000 series

Meet the future of advanced power quality metering. Modular design, multiple mounting and communication options, and flexible programming give the ION9000 the incredible adaptability needed for the IoT-enabled future. At 0.1S it exceeds even the most stringent accuracy standards, unlocking significant new energy savings for an innovative competitive edge. Onboard web pages provide meaningful, actionable EN50160 and IEEE519 power quality compliance data. Smart power event analysis (with Ecostruxure Power Monitoring Expert) correlates facility-wide, system-level events for decisive power quality information and root cause analysis. More than a meter, the ION9000 is the exclusive powerhouse of critical power systems.

Unprecedented accuracy

- 0.1S accuracy: third-party certified, for a new benchmark in high performance metering
- Ensures peak asset performance
- Ready for any future accuracy requirements
- Unlocks significant new energy savings for a new competitive edge
- Ideal for even the most demanding environments

Modular, flexible, and adaptable

- Multiple mounting options: DIN and panel with adapter plate
- Additional communication options with large display: optical and USB
- Calibration pulses (large display): on meter body and front display
- Native plug-and-play support: for Ecostruxure™ Power Monitoring Expert, Ecostruxure™ Power SCADA Operation, ION Setup

PowerLogic ION900series power quality meters



PowerLogic ION9000 series meters are ideal for low to high voltage applications in industrial or healthcare facilities, data centers, and utility networks

UL and CE markings as per UL/IEC 61010-1 Ed-3

ISO/EHS/OHSAS certified manufacturing facility reinforces product quality and reliability. Independent lab reports available for CE/UL.

Cyber secure

- Designed to align with your comprehensive grid cyber security policies
- When integrated within your security-driven architecture, the meter helps minimize vulnerabilities to your critical power assets and systems, reinforcing your security strategies

Smart power event analysis

- Powerful, system-level analysis engine provides meaningful, system-level power quality information, not just data
- Intelligently correlates facility-wide events
- Discovers root causes of any PQ event.
- Event correlation (based on time and type), waveform capture, disturbance direction detection

Onboard power quality analysis

- Complies with recognized power quality monitoring standards: IECB1000-4-30 class A, IEC62586-1 / IEC628586-2, and verified by third-party lab certifications
- Connect via web browser for full PQ analysis, easy-to-read analysis according to EN50160 and IEEE519 standards
- Patented disturbance direction detection, extended waveform capture (1s pre-event data / 3s event data @1024 s/c) and high speed RMS data capture for in-depth analysis of any PQ disturbance in your electrical system

ION programmability

- Legendary, patented ION technology allows tremendous flexibility
- Adapts easily to your power network as it becomes more dynamic, as new energy efficient devices are installed, or as new regulations are passed
- Protects your infrastructure investment now and in the future



Green Premium eco-mark:

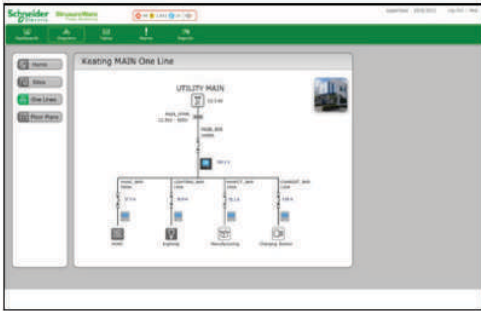
Confidently confirm and incorporate compliance status of our products into your environmental policies. Schneider Electric commits to disclose reliable, comprehensive information on the environmental impacts of our products.



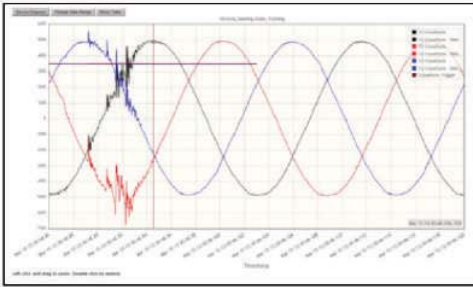
Click to learn more about the ION9000 series meters.

Let us help you simultaneously maximize power reliability, availability, and quality, as well as improve operational and cost efficiency for your entire enterprise with a fully integrated EcoStruxure™ Power solution.

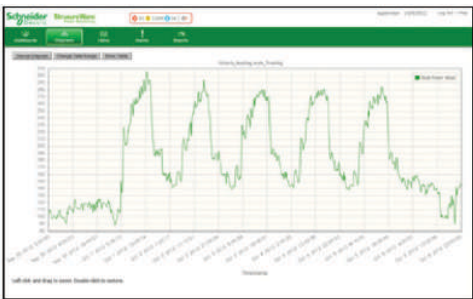
EcoStruxure Power Monitoring Expert



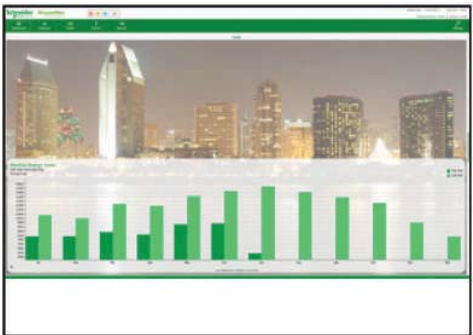
Real-time monitoring.



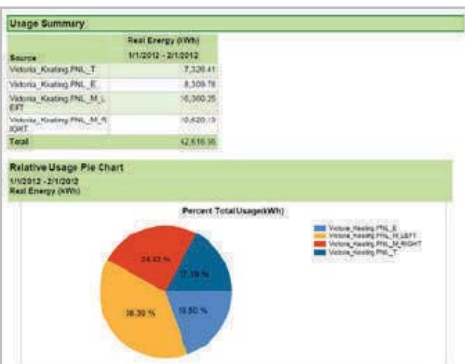
View and analyze waveforms captured by devices.



Create trend plots and analyze historical data.



Dashboard



Different report templates

EcoStruxurePower Monitoring Expert is an operations-level supervisory software that provides a complete power management solution for industry, large commercial and institutional buildings, data centres, healthcare facilities, and utilities. Engineering and management personnel can cut energy-related costs, avoid downtime, and optimise equipment operations by using the information provided by **EcoStruxure Power Monitoring Expert**.

EcoStruxure Power Monitoring Expert also enables tracking of real-time power conditions, analysis of power quality and reliability, and quick response to alarms to avoid critical situations. The software forms a layer of energy intelligence across your facility, campus or service area, acting as a unified interface to all electrical and piped utilities.

Typical applications:

- Monitor the facility electrical network and verify reliable operation
- Improve response to power-related events and restore operations quickly
- Analyze and isolate the source of power quality problems
- Analyze energy use to identify waste and reduce cost
- Estimate utility bills to verify accuracy and identify errors
- Allocate energy costs to departments to drive accountability and awareness
- Reduce peak demand surcharges and power factor penalties
- Identify excess capacity in existing infrastructure and avoid over-building
- Support proactive maintenance to prolong asset life.

Application for electric utilities:

- Improve Transmission & Distribution network reliability.
- Enhance substation automation
- Maximise the use of existing infrastructure
- Verify compliance with new power quality standards
- Analyse and isolate the source of power quality problems
- Help customers manage reliability using operational and power quality data.

EcoStruxure Power Monitoring Expert functions:

- Data acquisition and integration
- Real-time monitoring
- Trend analysis
- Power quality analysis
- Alarms and events
- Reporting
- Dashboards
- Manual and automated control
- Patented ION® technology.

Basic energy meters - Acti 9 iEM3000 Series Energy Meters

The Acti 9 iEM3000 Energy Meter Series offers a cost-attractive, competitive range of

DIN rail-mounted energy meters ideal for sub-billing and cost allocation applications.

Combined with communication systems, like Smart Link, the Acti 9 iEM3000 Series makes it easy to integrate electrical distribution measurements into customer's facility management systems. Ifs the right energy meter at the right price for the right job.

Two versions are available: 63A direct measure (iEM3100 models) and current transformers associated meter (iEM3200 models).

For each range, eight versions are available to satisfy basic to advanced applications:

- iEM3100/iEM3200: kWh meter with partial counter
- iEM3110/iEM3210: kWh meter with partial counter and pulse output. MID certified.
- iEM3115/iEM3215: multi-tariff meter controlled by digital input or internal clock, MID certified.
- iEM3135/iEM3235: energy meter, four quadrant, multi-tariffs with partial counter and current, voltage, power measurement. M-Bus communication, digital I/O and MID certified.
- iEM3150/iEM3250: kWh meter with partial counter and current, voltage, power measurement. Modbus communication.
- iEM3155/iEM3255: energy meter, four quadrant, multi-tariffs with partial counter and current, voltage, power measurement. Modbus communication, digital I/O, MID certified.
- iEM3165/iEM3265: energy meter, four quadrant, multi-tariffs with partial counter and current, voltage, power measurement. BACnet communication, digital I/O and MID certified.
- iEM3175/iEM3275: energy meter, four quadrant, multi-tariffs with partial counter and current, voltage, power measurement. LON communication, digital input and MID certified.

Function Guide		iEM3100	iEM3110	iEM3115	iEM3135	iEM3150	iEM3155	iEM3165	iEM3175	iEM3200	iEM3210	iEM3215	iEM3235	iEM3250	iEM3255	iEM3265	iEM3275
Direct measurement (up to 63A)		■	■	■	■	■	■	■	■	■	■	■	■	■	■	■	■
Measurement inputs through CTs (1A, 5A)		■	■	■	■	■	■	■	■	■	■	■	■	■	■	■	■
Measurement inputs through VTs		■	■	■	■	■	■	■	■	■	■	■	■	■	■	■	■
Active energy measurements class (total & partial kWh)		■	■	■	■	■	■	■	■	■	■	■	■	■	■	■	■
Four Quadrant Energy measurements		■	■	■	■	■	■	■	■	■	■	■	■	■	■	■	■
Electrical measurement (I, V, P, etc...)		■	■	■	■	■	■	■	■	■	■	■	■	■	■	■	■
Multi-tariff (internal clock)				4	4	4	4	4			4	4	4	4	4	4	4
Multi-tariff (external control)				4	2	2	2	2			4	2	2	2	2	2	2
Measurement display (number of lines)		■	■	■	■	■	■	■	■	■	■	■	■	■	■	■	■
Digital inputs		Programmable (tariff control or WAGES input)			1	1	1	1			1	1	1	1	1	1	1
		Tariff control only			2						2						
Digital outputs.		Programmable kWh pulse or kW alarm)			1	1	1				1		1	1	1		
		kWh pulse only			1						1						
kW overload alarm					■	■	■	■	■				■	■	■	■	■
M-Bus					■								■				
Modbus mm mm					■	■							■	■	■	■	■
BACnet								■									■
LON									■								■
MID (legal metrology certification)			■	■	■	■	■	■	■		■	■	■	■	■	■	■
Width (18 mm module in DIN Rail mounting)		5	5	5	5	5	5	5	5	5	5	5	5	5	5	5	5

Unit price (incl.VAT) in VND

72 x72 Analog ammeter for standard feeder



Meter model and description	Current measurement	Reference	Unit Price
iEM3100 basic energy meter	Direct connected 63 A	A9MEM3100	8.343.500
iEM3110 energy meter with pulse output	Direct connected 63 A	A9MEM3110	8.354.500
iEM3135 advanced multi-tariff energy meter	Direct connected 63A	A9MEM3135	10.395.000
& electrical parameter plus M-Bus comm port			
iEM3150 energy meter & electrical parameter plus Modbus RS485 comm port	Direct connected 63A	A9MEM3150	9.234.500
iEM3155 advanced multi-tariff energy meter & electrical parameter plus Modbus/ TP comm port	Direct connected 63A	A9MEM3155	9.069.500
iEM3165 advanced multi-tariff energy meter & electrical parameter plus Modbus, BACnet MS/ TP comm port	Direct connected 63A	A9MEM3165	10.895.500
iEM3200 basic energy meter	Transformer connected 5A	A9MEM3200	6.897.000
iEM3210 energy meter with pulse output	Transformer connected 5A	A9MEM3210	7.386.500
iEM3235 advanced multi-tariff energy meter & electrical parameter plus M-Bus comm port	Transformer connected 5A	A9MEM3235	9.839.500
iEM3250 energy meter & electrical parameter plus Modbus RS485 comm port	Transformer connected 5A	A9MEM3250	8.415.000
iEM3255 advanced multi-tariff energy meter & electrical parameter plus Modbus, / TP comm port	Transformer connected 5A	A9MEM3255	8.387.500
iEM3265 advanced multi-tariff energy meter & electrical parameter plus Modbus, BACnet MS/TP comm port	Transformer connected 5A	A9MEM3265	10.054.000